

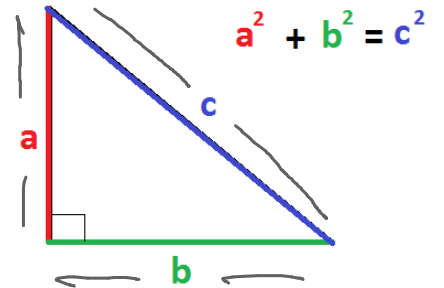
Pythagorean Theorem

The square of the hypotenuse of a right triangle is equal to the sum of the squares on the other two sides.

$$H^2 = P^2 + B^2$$

$$c^2 = a^2 + b^2$$

$$a^2 + b^2 = c^2$$



PYTHAGORAS THEOREM

$$a^2 + b^2 = c^2$$

$$c^2 = a^2 + b^2$$

$$c^2 = 3^2 + 4^2$$

$$c^2 = 9 + 16$$

$$c^2 = 25$$

$$\sqrt{c^2} = \sqrt{25} \quad (5^2 = 25)$$

$$c = 5$$

